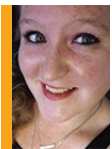


STUDENT SUCCESS STORY

BUILDING A SUCCESSFUL COACHING BUSINESS



FROM ASPIRATION TO ACHIEVEMENT



NICOLE B. is a passionate individual with a desire to empower others as a certified life coach. Driven by a vision to create a meaningful impact on people's lives, she enrolled in the **Certified Professional Life Coach** course offered through **Genesee Community College (GCC)**.

With a strong aspiration to collaborate with fellow life coaches and achieve her academic goals, Nicole was determined to succeed. However, the path to becoming a certified coach was not without its challenges. Finding a reliable practice coaching partner proved to be an obstacle, but with determination and the support of the Orleans County Job Development Agency, she persevered.

Nicole's decision to pursue a life coaching career was rooted in a deep desire to make a difference. Through the comprehensive curriculum and guidance of her **ed2go** instructors, she gained the knowledge and skills necessary to turn her passion into a thriving business.

As she navigated the complexities of building a coaching practice, Nicole discovered that the program's flexibility allowed her to balance her studies with personal and professional commitments. Upon successfully completing the course, she was able to obtain new career opportunities, even starting her own podcast!

CHALLENGE

Finding a consistent practice coaching partner proved to be a significant hurdle for Nicole while balancing coursework with other commitments.

SOLUTION

Online, self-guided ed2go course:
• **Certified Professional Life Coach**

RESULTS

Nicole's newly acquired knowledge and skills helped her launch her life coaching business, <http://www.bettertogether33.com>, and podcast successfully.

“I would definitely recommend this course. Everyone was amazing and helpful and the program itself was everything I was looking for and more.”



\$68,000+ ANNUALLY

is the average income for Life Coaches,
a 4.5% growth rate

Source: Glassdoor

Start or grow your ed2go partnership by connecting with your account manager.
partner.ed2go.com/connect-with-your-account-managers

